

NOTES:

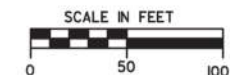
- 1) ALL PAVEMENT MARKING ON NORTHBOUND BUSSE RD (IL 83) IS PROPOSED PERMANENT PAVEMENT MARKING.
- 2) ALL PAVEMENT MARKING ON SOUTHBOUND BUSSE RD (IL 83) SOUTH OF STA. 28+00 IS PROPOSED PERMANENT PAVEMENT MARKING.

Close NB right lane and Right Turn Lane at EB Frontage Road for 2-weeks starting approximately May 22

Close NB right lane for 2-weeks starting approximately May 22

Begin Lane Drop South of Bryn Mawr

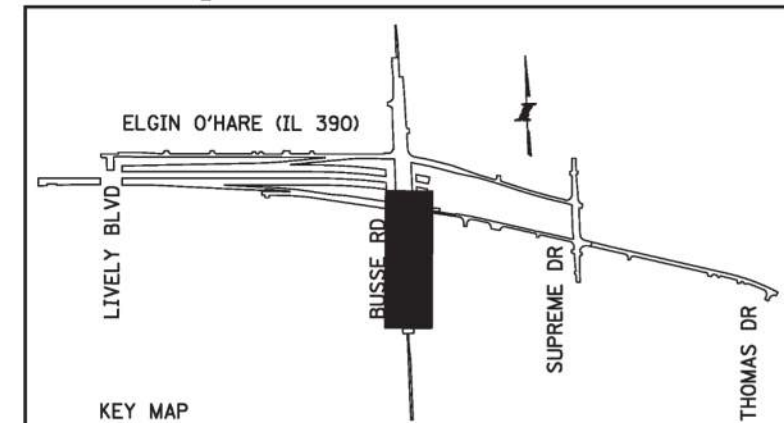
Use IDOT Standard for Signal Lane Closure and IDOT Standard Advanced Signing.



- CONSTRUCTION WORK ZONE
- TEMPORARY PAVEMENT
- TYPE II BARRICADES OR DRUMS WITH STEADY BURNING LIGHT @ 50' CENTERS (25' CENTERS ALONG TAPERS)
- TYPE III BARRICADE WITH STEADY BURNING LIGHT
- TEMPORARY CONCRETE BARRIER (70400100)
- IMPACT ATTENUATORS, TEMPORARY (FULLY REDIRECTIVE, NARROW), TEST LEVEL 3 (70600260)
- CONSTRUCTION SIGN PER IDOT STANDARDS
- DIRECTION OF TRAFFIC
- TEMPORARY RAMP, SPECIAL (X4060995)
- VERTICAL PANEL WITH STEADY BURNING LIGHT 50 FT C-C
- EXISTING PAVEMENT MARKING
- PROPOSED PERMANENT PAVEMENT MARKING
- TEMPORARY PAVEMENT MARKING ALREADY IN PLACE

MOT LEGEND

- | | |
|---|--|
| ① PAVEMENT MARKING TAPE, TYPE III - LETTERS AND SYMBOLS (70300510) | ⑫ THERMOPLASTIC PAVEMENT MARKING - LETTERS AND SYMBOLS (78000100) |
| ② PAVEMENT MARKING TAPE, TYPE III - LINE 4" (SOLID, WHITE) (70300520) | ⑬ THERMOPLASTIC PAVEMENT MARKING - LINE 4" (SOLID, WHITE) (78000200) |
| ③ PAVEMENT MARKING TAPE, TYPE III - LINE 4" (SOLID, YELLOW) (70300520) | ⑭ THERMOPLASTIC PAVEMENT MARKING - LINE 4" (SOLID, YELLOW) (78000200) |
| ④ PAVEMENT MARKING TAPE, TYPE III - LINE 4" (SOLID, DOUBLE YELLOW) (70300520) | ⑮ THERMOPLASTIC PAVEMENT MARKING - LINE 4" (SOLID, DOUBLE YELLOW) (78000200) |
| ⑤ PAVEMENT MARKING TAPE, TYPE III - LINE 4" (30' SKIP - 10' DASH, WHITE) (70300520) | ⑯ THERMOPLASTIC PAVEMENT MARKING - LINE 4" (30' SKIP - 10' DASH, WHITE) (78000200) |
| ⑥ PAVEMENT MARKING TAPE, TYPE III - LINE 6" (SOLID, WHITE) (70300540) | ⑰ THERMOPLASTIC PAVEMENT MARKING - LINE 6" (SOLID, WHITE) (78000400) |
| ⑦ PAVEMENT MARKING TAPE, TYPE III - LINE 6" (6' SKIP - 2' DASH, WHITE) (70300540) | ⑱ THERMOPLASTIC PAVEMENT MARKING - LINE 6" (6' SKIP - 2' DASH, WHITE) (78000400) |
| ⑧ PAVEMENT MARKING TAPE, TYPE III - LINE 8" (SOLID, WHITE) (70300550) | ⑲ THERMOPLASTIC PAVEMENT MARKING - LINE 8" (SOLID, WHITE) (78000500) |
| ⑨ PAVEMENT MARKING TAPE, TYPE III - LINE 12" (SOLID, YELLOW) (70300560) | ⑳ THERMOPLASTIC PAVEMENT MARKING - LINE 12" (SOLID, YELLOW) (78000600) |
| ⑩ PAVEMENT MARKING TAPE, TYPE III - LINE 12" (SOLID, WHITE) (70300560) | ㉑ THERMOPLASTIC PAVEMENT MARKING - LINE 12" (SOLID, WHITE) (78000600) |
| ⑪ PAVEMENT MARKING TAPE, TYPE III - LINE 24" (STOP BAR, WHITE) (70300570) | ㉒ THERMOPLASTIC PAVEMENT MARKING - LINE 24" SOLID WHITE (78000650) |



PEN TABLE: PEL:\dots\p1m\d1
 PLOT CFG: EDMA-p1m\d1p1
 USER NAME: \dots\p1m\d1
 PLOT DATE: 4/28/2015 PLOT SCALE: 1/8"=1'-0"

DRAWN BY: JAC DATE: 04/22/15
 CHECKED BY: AAS DATE: 04/28/15



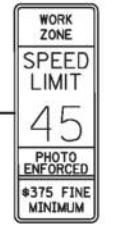
THE ILLINOIS STATE TOLL HIGHWAY AUTHORITY
 2700 OGDEN AVENUE
 DOWNERS GROVE, ILLINOIS 60515

REVISIONS		
NO.	DATE	DESCRIPTION

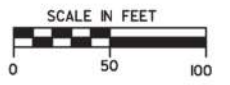
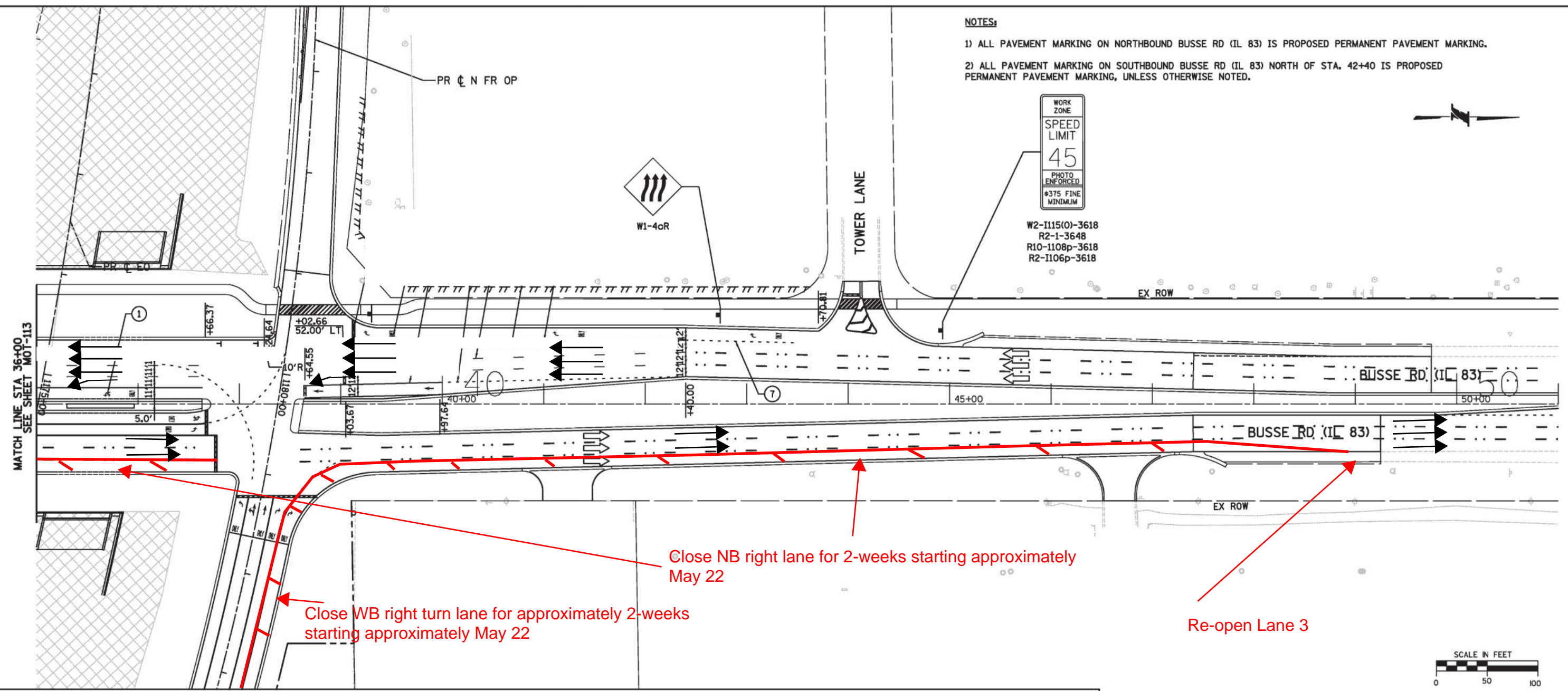
CONTRACT NO. I-14-4644
 MAINTENANCE OF TRAFFIC
 MOT PLAN - STAGE 4
 IL ROUTE 83

SHEET NO. MOT-113
 DRAWING NO. 230 OF 1391

NOTES:
 1) ALL PAVEMENT MARKING ON NORTHBOUND BUSSE RD (IL 83) IS PROPOSED PERMANENT PAVEMENT MARKING.
 2) ALL PAVEMENT MARKING ON SOUTHBOUND BUSSE RD (IL 83) NORTH OF STA. 42+40 IS PROPOSED PERMANENT PAVEMENT MARKING, UNLESS OTHERWISE NOTED.

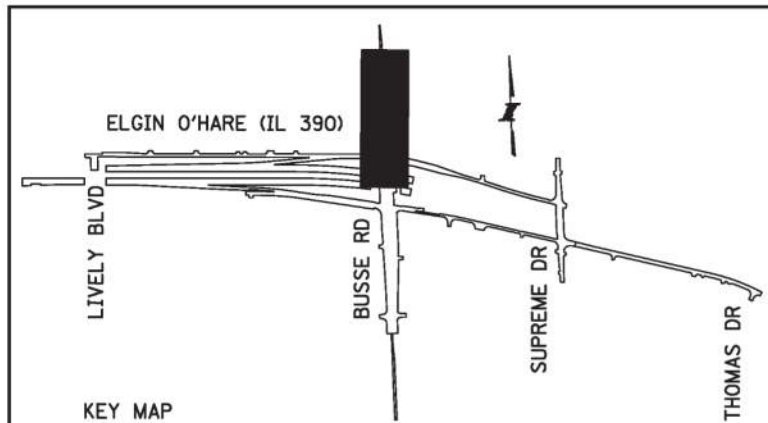


W2-1115(0)-3618
 R2-1-3648
 R10-1108p-3618
 R2-1106p-3618



MOT LEGEND

- | | | |
|--|--|---|
| <ul style="list-style-type: none"> CONSTRUCTION WORK ZONE TEMPORARY PAVEMENT TYPE II BARRICADES OR DRUMS WITH STEADY BURNING LIGHT @ 50' CENTERS (25' CENTERS ALONG TAPERS) TYPE III BARRICADE WITH STEADY BURNING LIGHT TEMPORARY CONCRETE BARRIER (70400100) IMPACT ATTENUATORS, TEMPORARY (FULLY REDIRECTIVE, NARROW), TEST LEVEL 3 (70600260) CONSTRUCTION SIGN PER IDOT STANDARDS DIRECTION OF TRAFFIC TEMPORARY RAMP, SPECIAL (X4060995) VERTICAL PANEL WITH STEADY BURNING LIGHT 50 FT C-C EXISTING PAVEMENT MARKING PROPOSED PERMANENT PAVEMENT MARKING TEMPORARY PAVEMENT MARKING ALREADY IN PLACE | <ul style="list-style-type: none"> PAVEMENT MARKING TAPE, TYPE III - LETTERS AND SYMBOLS (70300510) PAVEMENT MARKING TAPE, TYPE III - LINE 4" (SOLID, WHITE) (70300520) PAVEMENT MARKING TAPE, TYPE III - LINE 4" (SOLID, YELLOW) (70300520) PAVEMENT MARKING TAPE, TYPE III - LINE 4" (SOLID, DOUBLE YELLOW) (70300520) PAVEMENT MARKING TAPE, TYPE III - LINE 4" (30' SKIP - 10' DASH, WHITE) (70300520) PAVEMENT MARKING TAPE, TYPE III - LINE 6" (SOLID, WHITE) (70300540) PAVEMENT MARKING TAPE, TYPE III - LINE 6" (6' SKIP - 2' DASH, WHITE) (70300540) PAVEMENT MARKING TAPE, TYPE III - LINE 8" (SOLID, WHITE) (70300550) PAVEMENT MARKING TAPE, TYPE III - LINE 12" (SOLID, YELLOW) (70300560) PAVEMENT MARKING TAPE, TYPE III - LINE 12" (SOLID, WHITE) (70300560) PAVEMENT MARKING TAPE, TYPE III - LINE 24" (STOP BAR, WHITE) (70300570) | <ul style="list-style-type: none"> THERMOPLASTIC PAVEMENT MARKING - LETTERS AND SYMBOLS (78000100) THERMOPLASTIC PAVEMENT MARKING - LINE 4" (SOLID, WHITE) (78000200) THERMOPLASTIC PAVEMENT MARKING - LINE 4" (SOLID, YELLOW) (78000200) THERMOPLASTIC PAVEMENT MARKING - LINE 4" (SOLID, DOUBLE YELLOW) (78000200) THERMOPLASTIC PAVEMENT MARKING - LINE 4" (30' SKIP - 10' DASH, WHITE) (78000200) THERMOPLASTIC PAVEMENT MARKING - LINE 6" (SOLID, WHITE) (78000400) THERMOPLASTIC PAVEMENT MARKING - LINE 6" (6' SKIP - 2' DASH, WHITE) (78000400) THERMOPLASTIC PAVEMENT MARKING - LINE 8" (SOLID, WHITE) (78000500) THERMOPLASTIC PAVEMENT MARKING - LINE 12" (SOLID, YELLOW) (78000600) THERMOPLASTIC PAVEMENT MARKING - LINE 12" (SOLID, WHITE) (78000600) THERMOPLASTIC PAVEMENT MARKING - LINE 24" SOLID WHITE (78000650) |
|--|--|---|



PEN TABLE: PEL...
 PLOT CFG: EDMA...
 USER NAME: ...
 PLOT DATE: ...
 FILE NAME: ...
 PLOT SCALE: ...

DRAWN BY: JAC DATE: 04/22/15
 CHECKED BY: AAS DATE: 04/28/15



THE ILLINOIS STATE TOLL HIGHWAY AUTHORITY
 2700 OGDEN AVENUE
 DOWNERS GROVE, ILLINOIS 60515

REVISIONS		
NO.	DATE	DESCRIPTION

CONTRACT NO. I-14-4644
 MAINTENANCE OF TRAFFIC
 MOT PLAN - STAGE 4
 IL ROUTE 83

SHEET NO. MOT-114
 DRAWING NO. 231 OF 1391